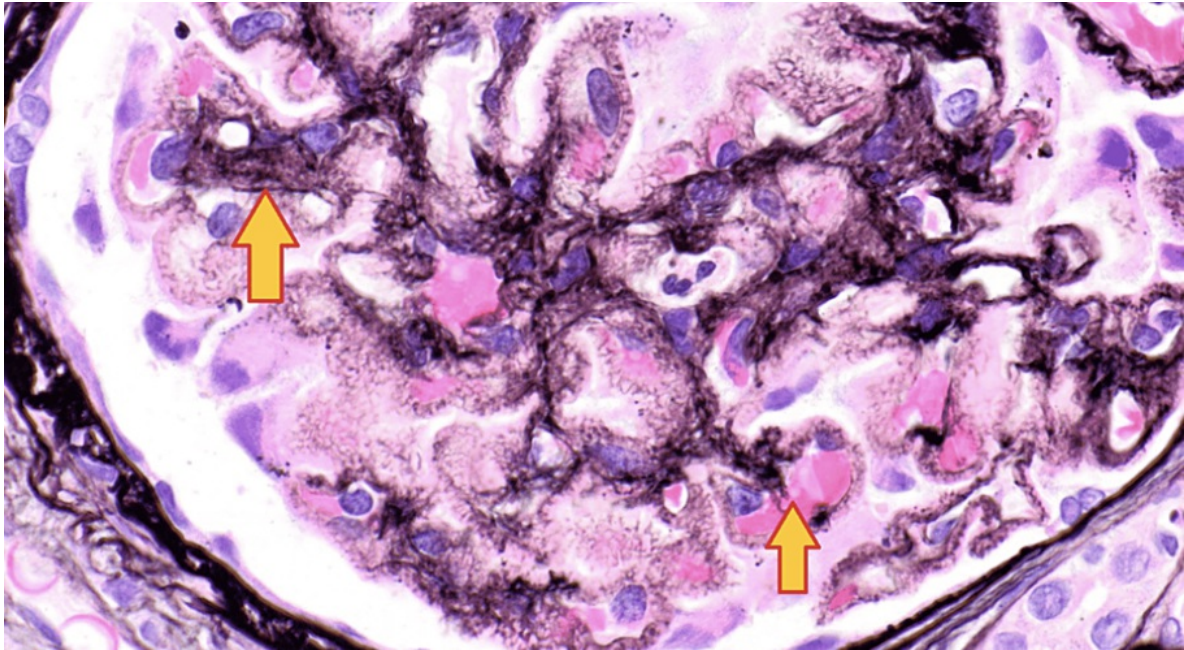


Picture Prognosis



A 56-year-old male with a history of hypertension, a month after receiving the first Moderna COVID-19 vaccine, presented with elevated creatinine, dyspnea, and lower limb swelling. Initial assessment showed kidney failure, hypocalcemia, hyperphosphatemia, and nephrotic-range proteinuria. Renal biopsy revealed positive staining for PLA2R antibodies. What's the diagnosis?

1. Acute Interstitial Nephritis
2. Membranous Nephropathy (MN)
3. Renal Thrombosis
4. Chronic Kidney Disease (CKD)



Picture Prognosis

A 56-year-old male with a history of hypertension, a month after receiving the first Moderna COVID-19 vaccine, presented with elevated creatinine, dyspnea, and lower limb swelling. Initial assessment showed kidney failure, hypocalcemia, hyperphosphatemia, and nephrotic-range proteinuria. Renal biopsy revealed positive staining for PLA2R antibodies. What's the diagnosis?

Answer: Membranous Nephropathy (MN)

Membranous nephropathy (MN) is a common cause of nephrotic syndrome globally. Primary MN accounts for about two-thirds of all MN cases. In the remaining cases, MN may be secondary to infections, influenza vaccinations [1], drugs (non-steroidal anti-inflammatory drugs (NSAIDs), gold, captopril, penicillamine), cancer, or autoimmune diseases