

# Spinal Schwannoma with Intradural Intramedullary Hemorrhage

Muhammad Nadeem<sup>1</sup>, Salman Mansoor<sup>2</sup>, Salman Assad<sup>3</sup>, Fariha Ilyas<sup>4</sup>, Ahmed H. Qavi<sup>5</sup>, Shoab Saadat<sup>6</sup>

1. MBBS, FCPS, Department of Urology, Pakistan Institute of Medical Sciences, Islamabad, Pakistan, Islamabad, PAK 2. Department of Neurology, Shifa International Hospital, Islamabad, Pakistan 3. Department of Medicine, Shifa International Hospital, Islamabad, Pakistan 4. Department of Medicine, University of Texas at Austin, Dell Medical School, Austin, TX, USA 5. Department of Medicine, Albert Einstein College of Medicine, Montefiore Medical Center, New York, United States 6. Department of Nephrology, Shifa International Hospital, Islamabad, Pakistan

✉ **Corresponding author:** Fariha Ilyas, ilyas.fariha@gmail.com

Disclosures can be found in Additional Information at the end of the article

---

---

## Abstract

Patients with spinal abnormalities infrequently present with intradural intramedullary bleeding. The more common causes include spinal trauma, arteriovenous malformations and saccular aneurysms of spinal arteries. On occasion, spinal cord tumors either primary or metastatic may cause intramedullary bleed with ependymoma of the conus medullaris. Spinal nerve sheath tumors such as schwannomas only rarely cause intradural intramedullary bleed, especially in the absence of spinal cord or nerve root symptoms. We report a case of spinal intradural schwannoma presenting with acute onset of quadriplegia. Cerebral angiography studies were negative but magnetic resonance imaging (MRI) of the spine revealed a large hemorrhagic tumor in the thoracolumbar junction. However, we suggest that the patients with intradural intramedullary bleed should be evaluated for underlying spine disease.

---

**Categories:** Neurology, Oncology, Neurosurgery

**Keywords:** sah, intradural, spine, schwannoma

## Introduction

Spinal schwannomas are slow growing spinal nerve sheath benign tumors. These are diagnosed by either imaging studies incidentally or after manifesting symptoms like a backache and progressive neurological deficit [1]. These tumors are seen commonly in intradural extramedullary location and in fourth to the sixth decade of life. They rarely present with the acute emergency [2]. We report a case of thoracolumbar intradural intramedullary schwannoma with acute hemorrhage in an adult male patient who had acute onset of quadriplegia. Informed consent was obtained from the patient for this study.

## Case Presentation

A 68-year-old female was presented with back pain since last one day. She was in her usual state of health when around the day before she felt dizzy; as she got out of bed, fell on the floor, banging her back on the bed. She received an injury to her back and was bruised on her arms and other parts of the body. The patient did not lose consciousness. Soon after her fall, she developed numbness of her legs and was gradually unable to move. She had urinary incontinence since last day and night which required urgent catheterization when brought to the hospital. Her pain had now spread to the spine. On physical examination, the Glasgow

Received 02/12/2017  
Review began 02/26/2017  
Review ended 03/01/2017  
Published 03/06/2017

© Copyright 2017

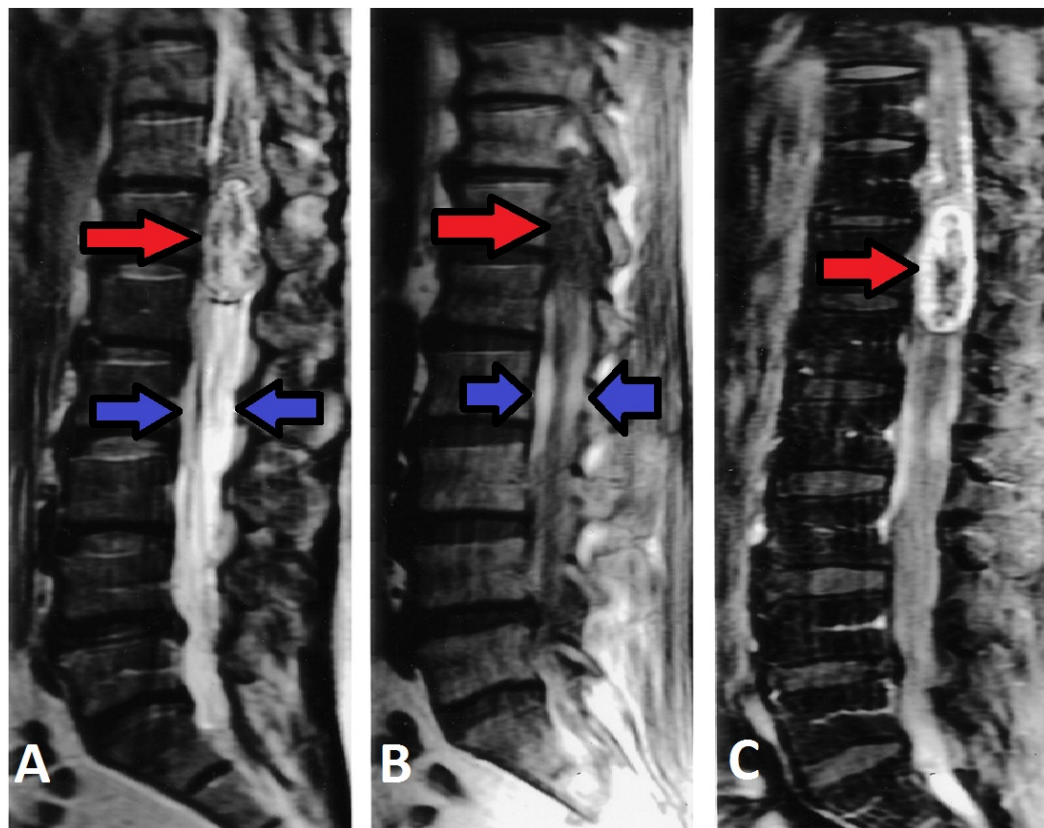
Nadeem et al. This is an open access article distributed under the terms of the Creative Commons Attribution License CC-BY 3.0., which permits unrestricted use, distribution, and reproduction in any medium, provided the original author and source are credited.

### How to cite this article

Nadeem M, Mansoor S, Assad S, et al. (March 06, 2017) Spinal Schwannoma with Intradural Intramedullary Hemorrhage. Cureus 9(3): e1082. DOI 10.7759/cureus.1082

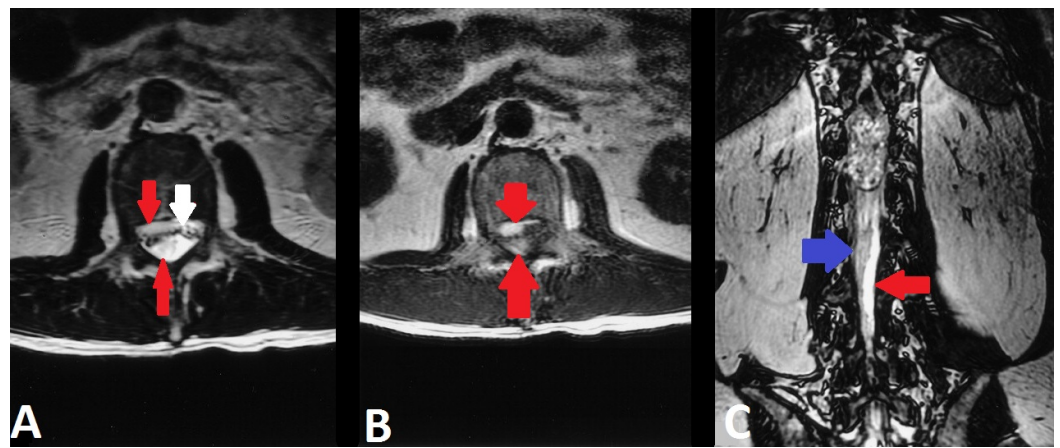
Coma Scale (GCS) is 15/15, lower back pain, spinous process is tender and straight leg raise test (SLR) > 90. The deep tendon reflexes were decreased, paraplegia and loss of sphincters. Extremities and blood vessels were warm and well perfused.

Biochemical laboratory studies were unremarkable except for a mild decrease in levels of sodium (132 mEq/L), potassium (3.3 mEq/L) and chloride (92 mEq/L). MRI T1-weighted images show a large mass at the conus medullaris with heterogeneous signal intensity (Figure 1). MRI spine shows hyperintense subdural blood collections located both anterior and posterior to the cauda equina (Figure 2).



**FIGURE 1: MRI of thoracolumbar spinal tumor**

Sagittal T2- [A] and T1-weighted [B] imaging shows a heterogeneous signal intensity of large mass at the conus medullaris (red arrows). The two hyperintense subdural hematomas located caudal to the mass (blue arrows). There is heterogeneous enhancement of the mass post-intravenous contrast [C]

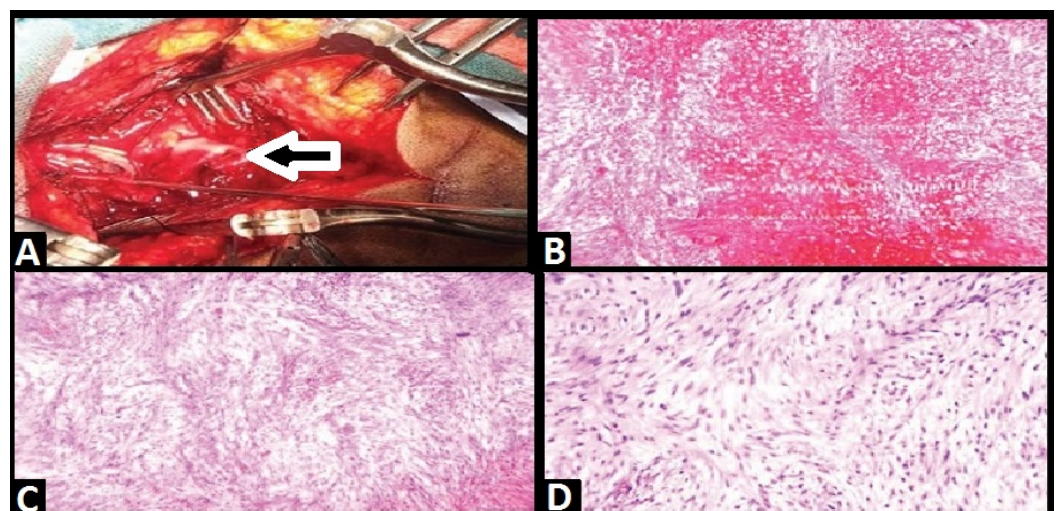


**FIGURE 2: MRI spine**

Axial T2- [A] and T1-weighted [B] images show hyperintense subdural blood collections located both anterior and posterior (red arrows) to the cauda equina. The subdural blood is separate from the epidural fat signal intensity anteriorly [A, white arrow]. Coronal fast imaging with steady-state acquisition [C] shows the posterior blood collection (blue arrow) that is distinctly isolated from the hyperintense cerebrospinal fluid (red arrow)

### Intra-operative Course

The patient was offered surgery for exploration and spinal decompression. Coagulation parameters at the time of presentation were within normal limits. She underwent a thoracic laminectomy, exploration of the subdural space, evacuation of a compressive intradural intramedullary hematoma and resection of thoracic schwannoma. Upon exploration of the intradural space, a thick area of the compressive clot was noted, along with a traversing nerve root noted to have a reddish-tan colored small growth adherent to the clot, concerning for a nerve sheath tumor. The clot was evacuated, the tumor was resected. The specimen was sent for histopathology, post-operatively that revealed schwannoma [Figure 3].



**FIGURE 3: Operative and histopathology findings**

[A] The intraoperative picture shows the schwannoma with intratumoral hemorrhage (arrow). [B] Histopathological study of the mass shows macro hemorrhage within the mass [C, D] cellular area and loose myxoid area

At the time of discharge from the hospital to a rehabilitation facility, the patient had regained some function in the lower extremities (one-two out of five on neurological power exam) though she did not show any antigravity function on examination. There were many sessions done for physiotherapy involving venous pumps, therapeutic limp physio, and positioning.

## Discussion

Primary spinal cord tumors are classified based on their locations as extradural, intramedullary and intradural extramedullary. Surgical resection offers adequate treatment for intradural extramedullary tumors that include schwannomas, neurofibromas, and meningiomas [3]. Schwannomas are confined to the peripheral nerves or spinal nerve roots with well-defined borders without malignant transformation [4]. Various theories based on tumor locations and histologic features have been presented to scientific society to explain this process [5,7]. According to the vascular theory, spontaneous thrombosis of ectatic and hyalinized vessels of the tumor may occur leading to distal tumor necrosis and hemorrhage [6]. The mechanical theory, on the other hand, suggests that disturbance at the border of the tumor and the nerve tissue directs the hemorrhage into subarachnoid space [8-9]. Traction on vascular attachments to nerve roots may also cause interruption of the blood vessels on the tumor's surface [10]. However, other probable reasons for the hemorrhage propensity in such large tumors of schwannomas can be explained due to central ischemic necrosis associated with both malignant transformation and neovascularization [10]. There is no definite histopathological evidence of malignant transformation in the present case, despite the history of trauma. Blood vessels were warm and well perfused. The patient was in her usual state of consciousness. Mechanical theory suggests subarachnoid hemorrhage in contrasts to our case of intradural intramedullary bleed [3]. We are of the view that rupture of the weak, ectatic tumor vessels and ensuing dissection of the blood into the subarachnoid space was caused by the degenerative changes accompanied with the mechanical stress at the conus.

## Conclusions

It is relatively rare for patients with spinal pathologies to present with intradural intramedullary bleed. This report of thoracolumbar schwannoma presenting clinically with intradural and intramedullary bleed illustrates the diagnostic difficulties for both neuroradiologists and neurosurgeons. It highlights the importance of an in-depth systemic review and a high index of clinical suspicion for spinal disease.

## Additional Information

### Disclosures

**Human subjects:** Consent was obtained by all participants in this study. **Conflicts of interest:** In compliance with the ICMJE uniform disclosure form, all authors declare the following: **Payment/services info:** All authors have declared that no financial support was received from any organization for the submitted work. **Financial relationships:** All authors have declared that they have no financial relationships at present or within the previous three years with any organizations that might have an interest in the submitted work. **Other relationships:** All authors have declared that there are no other relationships or activities that could appear to have influenced the submitted work.

## References

1. Sharifi G, Mortaz M, Parsaei B: Multiple intradural extramedullary tumors presenting with paraplegia after trauma. *Acta Neurochirurgica*. 2009, 151:697-8. [10.1007/s00701-009-0239-z](https://doi.org/10.1007/s00701-009-0239-z)

2. Yeh HM, Leung JH, Huang KC, Tung CL, Huang CL, Huang KM: A long segmental hemorrhagic spinal schwannoma with atypical presentation. *J Radiol Sci.* 2011, 36:191-194.
3. Arora RK, Kumar R: Spinal tumors: trends from northern India . *Asian J Neurosurg.* 2015, 10(4):291-297. [10.4103/1793-5482.162707](#)
4. Parmar H, Patkar D, Gadani S, Shah J: Cystic lumbar nerve sheath tumours: MRI features in five patients. *J Med Imaging Radiat Oncol.* 2001, 45(2):123-7. [10.1046/j.1440-1673.2001.00891.x](#)
5. De Divitiis E, Maiuri F, Corriero G, Donzelli R: Subarachnoid hemorrhage due to a spinal neurinoma. *Science direct.* 1985, 24(2):187-90. [10.1016/0090-3019\(85\)90184-3](#)
6. Luxon LM, Harrison MJ: Subarachnoid hemorrhage and papilledema due to a cervical neurilemmoma.. *J Neurosurg.* 1978, 48(6):1015-1018. [10.3171/jns.1978.48.6.1015](#)
7. Mills B, Marks PV, Nixon JM: Spinal subarachnoid haemorrhage from an "ancient" schwannoma of the cervical spine. *Br J Neurosurg.* 1993, 7(5):557-9. [10.3109/02688699308995079](#)
8. Savardekar A, Singla N, Mohindra S, Ahuja CK, Gupta SK: Cystic spinal schwannomas: a short series of six cases. Can we predict them preoperatively?. *Surg Neurol Int.* 2014, 5(7):349-353.
9. Cordon T, Bekar A, Yaman O: Spinal subarachnoid hemorrhage attributable to schwannoma of the cauda equina. *World Neurosurg.* 1999, 51(4):373-375. [10.1016/S0090-3019\(98\)00046-9](#)
10. Argyropoulou PI, Argyropoulou MI, Tsampoulas C, Gogos P, Manavis I, Efremidis SC: Myxopapillary ependymoma of the conus medullaris with subarachnoid haemorrhage: MRI in two cases. *Neuroradiology.* 2001, 43(6):489-491. [10.1007/s002340000418](#)